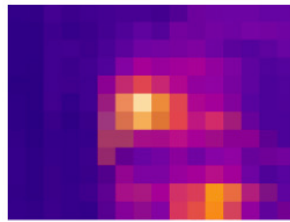
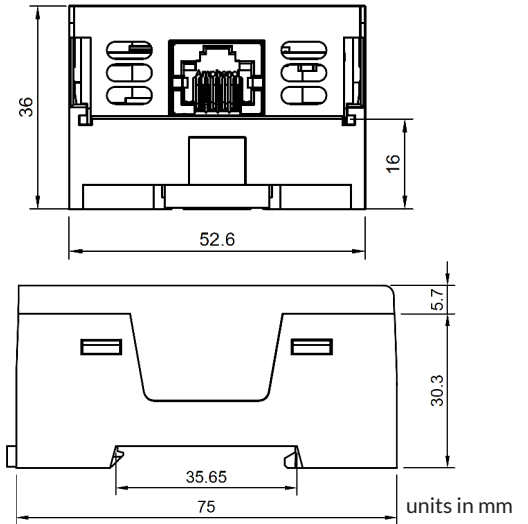
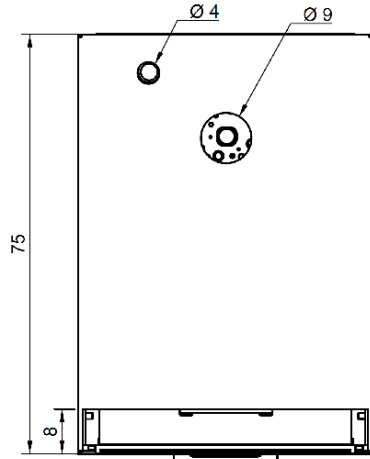
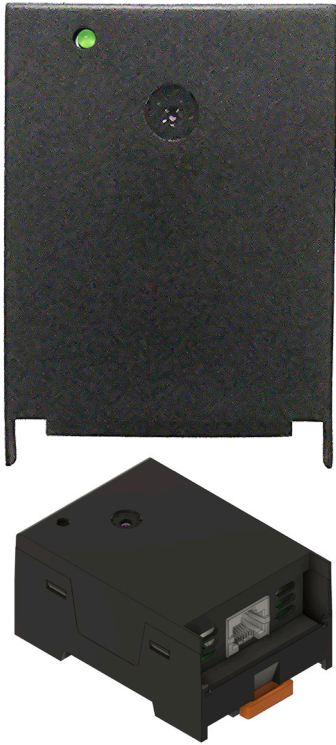




DIN Rail Thermography Sensor (M-D-THIMG-XS)



192 points (x-small)



The M-D-THIMG-XS is a continuous thermography monitoring sensor that provides full live thermal image of the object and equipment it sees. It is the world's first SNMP & Modbus thermography camera sensor that monitors the temperature of what it actually sees. 192 temperature measurement points in one image, analyzed every 2 seconds. It supports Modbus TCP & RTU, BACnet/IP, SNMP, and MQTT open protocols. This thermography sensor is designed for standard 35 mm DIN-rail mounting within electrical panels and enclosures.

Certifications:

cULus 62368-1 Listed

Sensor Metrics:

Target temperature range	-40°C to 300°C (-40°F to 572°F)
Temperature accuracy	± 1.5°C (±2.7°F)
Field of View (FoV)	110° horizontal (wide) 75° vertical
Max object distance	<2m
Resolution	16x12 pixels

Technical Specifications:

Powered by	Base Unit (X-BASE-XX) (required)
Connectivity	RJ45 cable transmitting data & power from Base Unit to Sensor
Cable specification	RJ45 CAT 6/7 recommended Up to 100m (330ft) subject to cable quality & interference
Power usage	295.8mW

Environmental Specifications:

Operating temperature range	-10°C to +85°C (14°F to 185°F)
Humidity (operating and storage)	<90% RH (non-condensating)

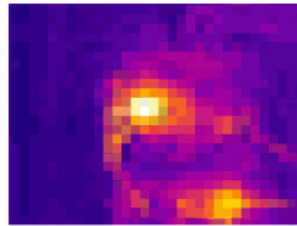
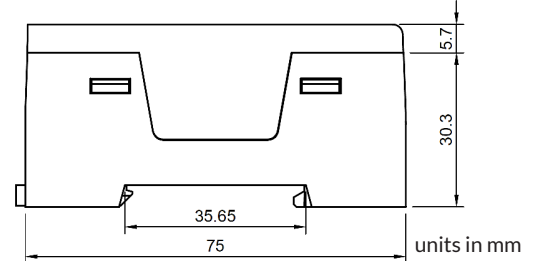
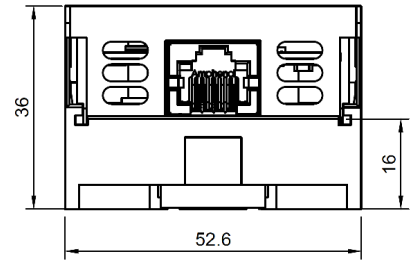
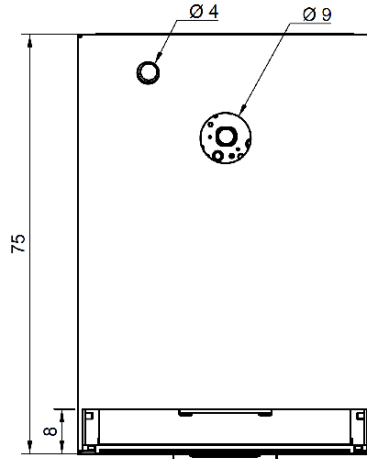
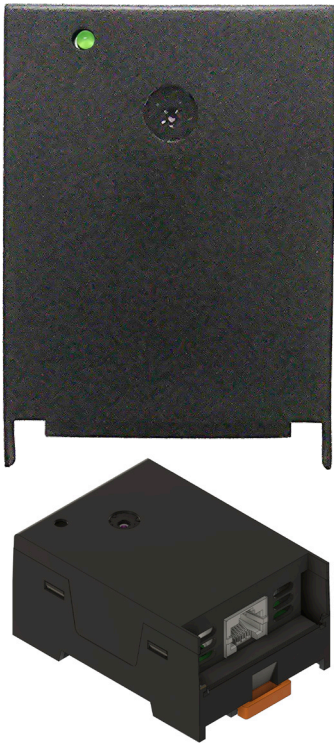
Physical Specifications:

Sensor enclosure	UL-rated plastic enclosure
Mounting option	DIN rail mount
Dimensions	75mm (2.95") x 52.6mm (2.07") x 36mm (1.42")
Weight	63.7g (0.14lbs)

The visual appearance and dimensions presented on this datasheet are for illustrative purposes only and are subject to change without prior notice. Actual product appearance and dimensions may vary due to continuous product improvement and manufacturing



DIN Rail Thermography Sensor (M-D-THIMG-SM)



768 points (small)



The M-D-THIMG-SM is a continuous thermography monitoring sensor that provides full live thermal image of the object and equipment it sees. It is the world's first SNMP & Modbus thermography camera sensor that monitors the temperature of what it actually sees. 768 temperature measurement points in one image, analyzed every 2 seconds. It supports Modbus TCP & RTU, BACnet/IP, SNMP, and MQTT open protocols. This thermography sensor is designed for standard 35 mm DIN-rail mounting within electrical panels and enclosures.

Certifications:

cULus 62368-1 Listed

Sensor Metrics:

Target temperature range	-40°C to 300°C (-40°F to 572°F)
Temperature accuracy	±1.5°C (±2.7°F)
Field of View (FoV)	110° horizontal (wide) 75° vertical
Max object distance	<2m
Resolution	32x24 pixels

Technical Specifications:

Powered by	Base Unit (X-BASE-XX) (required)
Connectivity	RJ45 cable transmitting data & power from Base Unit to Sensor
Cable specification	RJ45 CAT 6/7 recommended Up to 100m (330ft) subject to cable quality & interference
Power usage	345.1mW

Environmental Specifications:

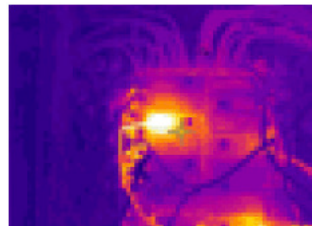
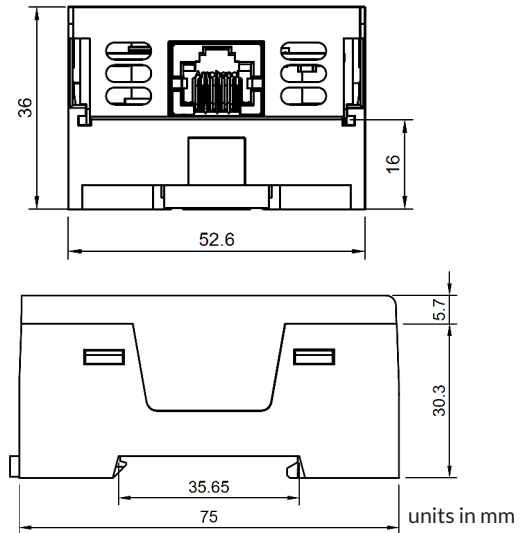
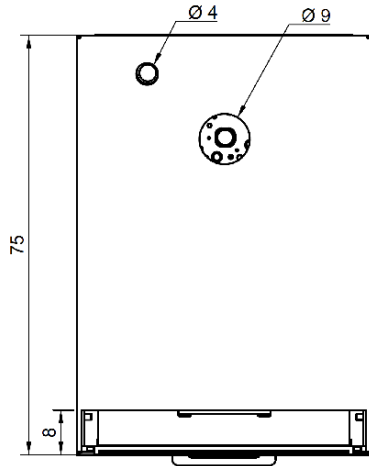
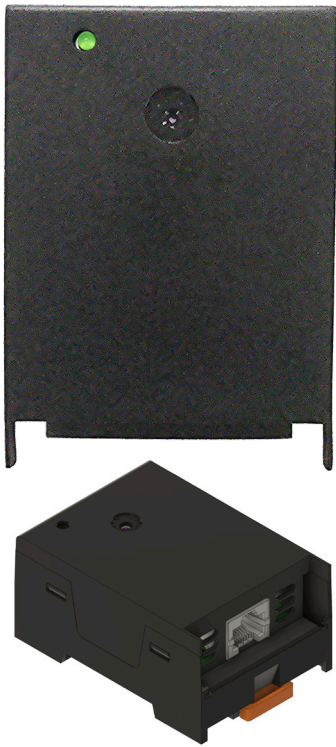
Operating temperature range	-10°C to +85°C (14°F to 185°F)
Humidity (operating and storage)	<90% RH (non-condensating)

Physical Specifications:

Sensor enclosure	UL-rated plastic enclosure
Mounting option	DIN rail mount
Dimensions	75mm (2.95") x 52.6mm (2.07") x 36mm (1.42")
Weight	63.7g (0.14lbs)



DIN Rail Thermography Sensor (M-D-THIMG-ME)



4800 points (medium)



The M-D-THIMG-ME is a continuous thermography monitoring sensor that provides full live thermal image of the object and equipment it sees. It is the world's first SNMP & Modbus thermography camera sensor that monitors the temperature of what it actually sees. 4800 temperature measurement points in one image, analyzed every 2 seconds. It supports Modbus TCP & RTU, BACnet/IP, SNMP, and MQTT open protocols. This thermography sensor is designed for standard 35 mm DIN-rail mounting within electrical panels and enclosures..

Certifications:

cULus 62368-1 Listed

Sensor Metrics:

Scene dynamic range	High gain mode (lower temperature): -10°C to 140°C (14°F to 284°F)
Temperature accuracy	High gain mode (lower temperature): ±5°C (±9°F) or 5%
Field of View (FoV)	50° horizontal 63.5° diagonal
Max object distance	45m
Resolution	80x60 pixels

Technical Specifications:

Powered by	Base Unit (X-BASE-XX) (required)
Connectivity	RJ45 cable transmitting data & power from Base Unit to Sensor
Cable specification	RJ45 CAT 6/7 recommended Up to 100m (330ft) subject to cable quality & interference
Power usage	690mW - 1.577W (rise on wattage upon shutter)

Environmental Specifications:

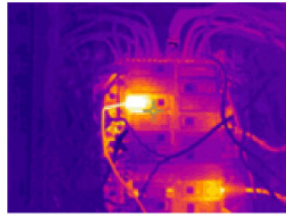
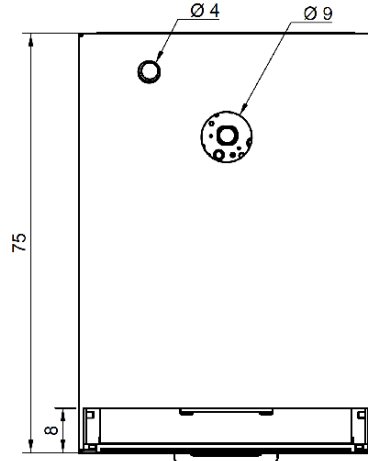
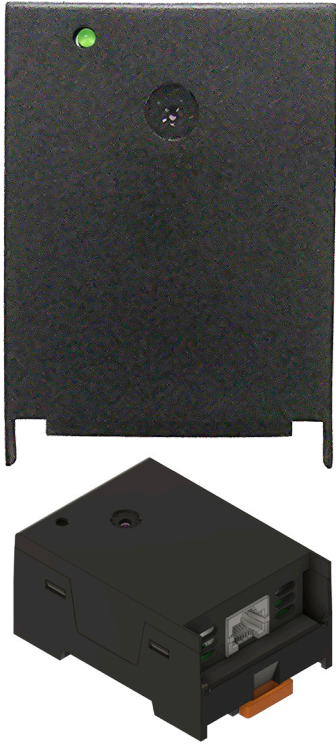
Operating temperature range	-10°C to +80°C (14°F to 176°F)
Humidity (operating and storage)	<90% RH (non-condensating)

Physical Specifications:

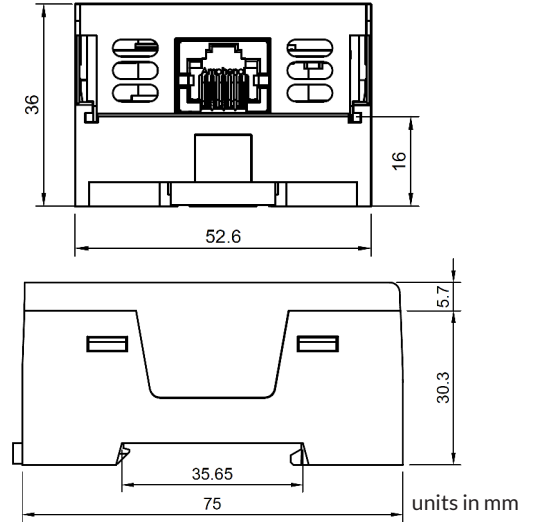
Sensor enclosure	UL-rated plastic enclosure
Mounting option	DIN rail mount
Dimensions	75mm (2.95") x 52.6mm (2.07") x 36mm (1.42")
Weight	63.7g (0.14lbs)



DIN Rail Thermography Sensor (M-D-THIMG-LG2)



19200 points (large)



The M-D-THIMG-LG2 is a continuous thermography monitoring sensor that provides full live thermal image of the object and equipment it sees. It is the world's first SNMP & Modbus thermography camera sensor that monitors the temperature of what it actually sees. 19200 temperature measurement points in one image, analyzed every 2 seconds. It supports Modbus TCP & RTU, BACnet/IP, SNMP, and MQTT open protocols. This thermography sensor is designed for standard 35 mm DIN-rail mounting within electrical panels and enclosures.

Certifications:

cULus 62368-1 Listed

Sensor Metrics:

Scene dynamic range	High gain mode (lower temperature): -10°C to 140°C (14°F to 284°F)
Temperature accuracy	High gain mode (lower temperature): ±5°C (±9°F) or 5%
Field of View (FoV)	95° horizontal 119° diagonal
Max object distance	45m
Resolution	160x120 pixels

Technical Specifications:

Powered by	Base Unit (X-BASE-XX) (required)
Connectivity	RJ45 cable transmitting data & power from Base Unit to Sensor
Cable specification	RJ45 CAT 6/7 recommended Up to 100m (330ft) subject to cable quality & interference
Power usage	690mW - 1.577W (rise on wattage upon shutter)

Environmental Specifications:

Operating temperature range	-10°C to +80°C (14°F to 176°F)
Humidity (operating and storage)	<90% RH (non-condensating)

Physical Specifications:

Sensor enclosure	UL-rated plastic enclosure
Mounting option	DIN rail mount
Dimensions	75mm (2.95") x 52.6mm (2.07") x 36mm (1.42")
Weight	63.7g (0.14lbs)