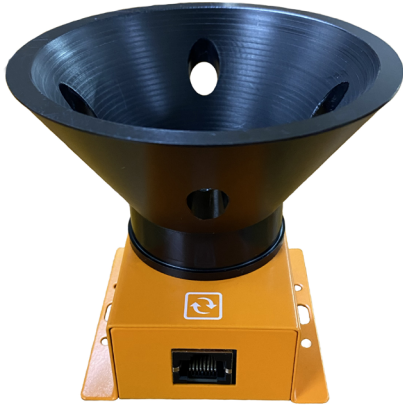


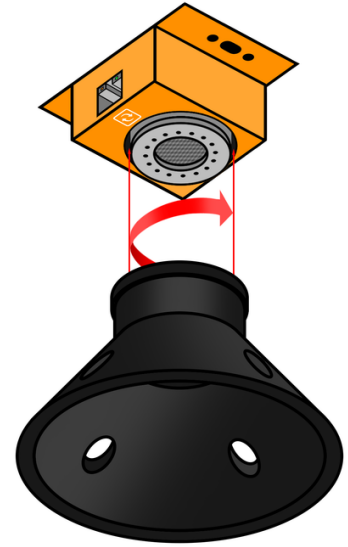
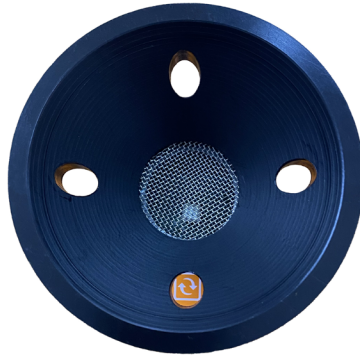


GAS-CONE (AX-GAS-CONE)

SIDE VIEW



TOP VIEW



The GAS-CONE is designed to screw onto the sensor, seamlessly replacing the gas cap. This enhances the detection of lighter than air gases, such as hydrogen and methane.

Physical Specifications:

Product material	POM
Dimensions	Outer diameter 100.15mm (3.94") Height: 57.37mm (2.26")
Weight (sensor excluded)	58.1g (0.13 lbs.)