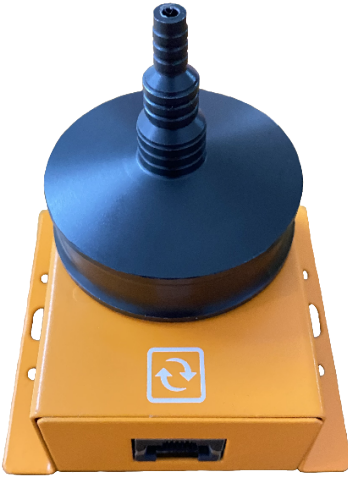


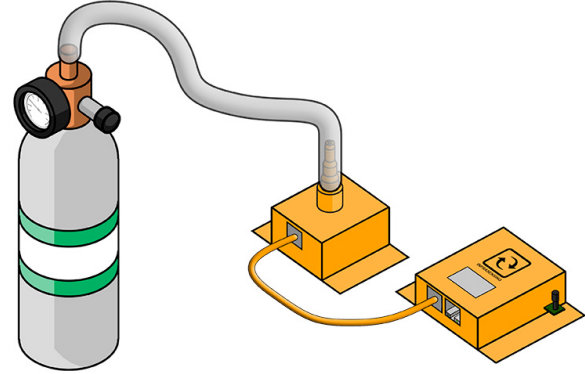


GAS-BUMP (AX-GAS-BUMP)

SIDE VIEW



TOP VIEW



The GAS-BUMP adapter is specifically designed for bump testing our gas sensors. It allows for easy connection of any tubing provided by your local gas supplier to the gas sensor.

Physical Specifications:

Product material	POM
Dimensions	Tip of the adapter: 5.5mm (0.22") Height: 49.30mm (2.26")
Weight (sensor excluded)	22.6g (0.050 lbs.)