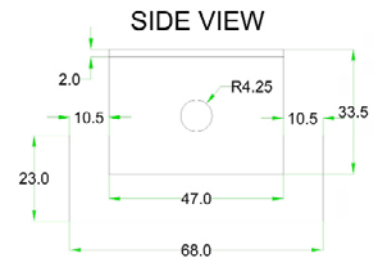
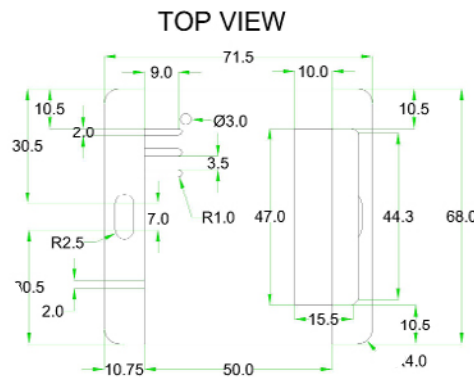




Optical Dust Sensor (ENV-DUST)



General Description

Designed to monitor dust particles in data centers, server rooms & cabinets.

Key Features

- plugs into the base unit (BASE-WIRED).
- powered by the base unit (BASE-WIRED).
- OU Rack or wall mountable sensor.
- alerts via SNMP Traps, email, SMS or voice calls.
- compact & affordable optical dust sensor made in Japan.
- reports dust density in mg/m^3
- range: 0 to $600 \mu\text{g}/\text{m}^3$
- measures total dust density (PM2.5 & PM10 combined)
- sensitivity: $100 \mu\text{g}/\text{m}^3$

Technical Specifications

| | |
|------------------------|----------------------------------|
| Power Source: | SensorGateway (BASE-WIRED) |
| Power Usage | 156 mW |
| Range: | 0 - $600 \mu\text{g}/\text{m}^3$ |
| Particle size: | PM2.5 and PM10 |
| Sensitivity: | $100 \mu\text{g}/\text{m}^3$ |
| Measurement mechanism: | Optical |

Environmental and Physical Specification

| | |
|----------------------------------|---|
| Operating temperature range | 0°C to +75°C (32°F to +167°F) in PoE mode |
| Humidity (operating and storage) | < 90% rH (non-condensating). |
| Dimensions | 74 mm (2.9") x 66 mm (2.59") x 22 mm (0.8") |
| Weight | 0.14kg (0.31 lbs.) |